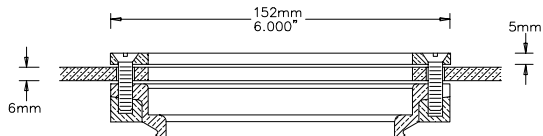
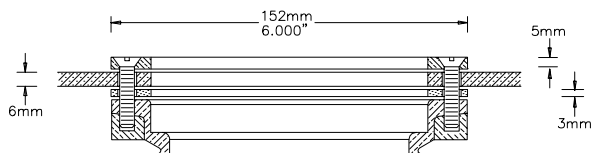


**HEIGHT ADJUSTABLE CAST BRONZE BASES WITH SUBSURFACE MEMBRANE CLAMP & BASE OPTIONS**

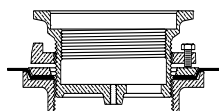
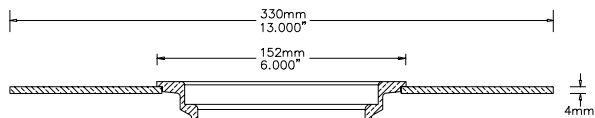
(Add: /-02 TO # OF BASE) **-02 OPTION**  
**-SURFACE MEMBRANE CLAMP**



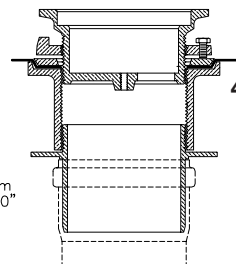
(Add: /-03 TO # OF BASE) **-03 OPTION**  
**-SURFACE LINER CLAMP w. GASKET**



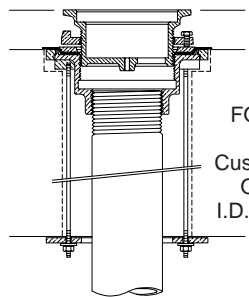
Add: /-04 TO # OF BASE **-04 OPTION**  
**--PUDDLE FLANGE** For liquid membranes



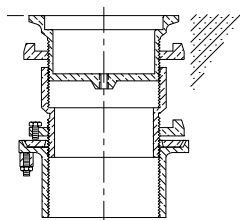
**-05 OPTION**  
 -(Add: /-05 TO # OF BASE)  
**THREADED TOP**



**-07 OPTION**  
 (Add: /-07 TO # OF BASE)  
**4" BSP/NPS ADAPTER FOR PEM 6114 BASE FOR DIN 19534 PVC PIPE WITH DIN 4060 LIP SEALS (DN :100mm )**



**-08 OPTION**  
 -(Add: /-08 TO # OF BASE)  
**UNDERDECK CLAMP FOR STANDARD SLAB THICKNESS OF :150mm\6" to 200mm\8" Custom made for other slab thickness O.D. of Base & Clamp: 190mm\7.5" I.D. of Opening in concrete: 150mm\6"**



**-09 OPTION**  
 -(Add: /-09 TO # OF BASE)  
**ELEVATION EXTENSION ADJUSTABLE EXTENSION ADDITIONAL TO NORMAL HEIGHT ADJUSTMENT: 45 to 80 mm\1.750" to 3.140"**

PEM 6100 Series, all cast bronze adjustable bases are designed for the mounting of PEM 6200 Series pool, drain and suction fittings.

Levelling height adjustment permits ease of installation to final floor grade. All pipes connecting into these bases should be non corrodible. As cement bonds well to clean natural cast bronze surfaces, normally no other no leak devices are required on connecting pipes. Threaded joint must have suitable thread sealant on threads.

**To specify & order a complete fixture:**  
**Base + Options + Fitting**  
 Example: To order PEM 6114, with 05 threaded top, 08 Under Deck Clamp, 09 Elevation Extension & 6222-5 Fitting:  
**Specify: 6114/-05/-08/-09-6222-5**

**STANDARD BASE ( SLIP IN TOP )**

	<p><b>PEM 6112</b>                  #606-2000</p>
	<p><b>PEM 6113</b>                  #606-3000</p>
	<p><b>PEM 6114</b>                  #606-4000</p>

A = Levelling height adjustment range: 32mm to 50mm \ 1.250" to 2.0"