

# PEM 6100

## BASES FOR 6200 SERIES FITTINGS

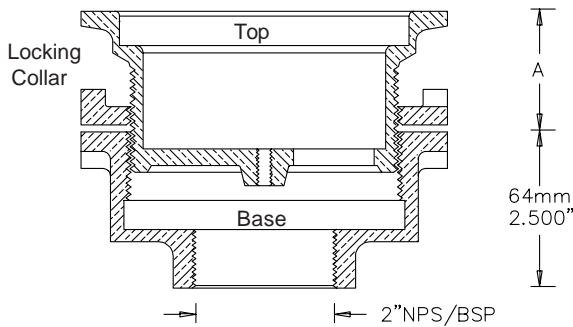
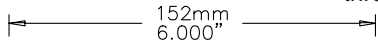
**HEIGHT ADJUSTABLE  
CAST BRONZE  
BASES & BASE OPTIONS**



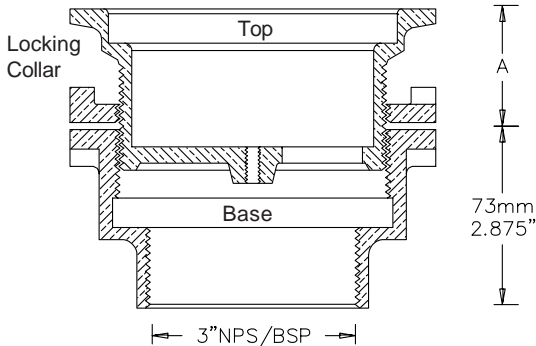
**PEM 6103**

**STANDARD BASES (SLIP IN TOP)**

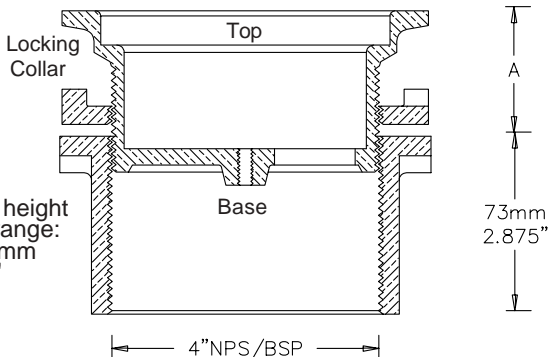
**PEM 6102 / #603-2000**



**PEM 6103 / #603-3000**



**PEM 6104 / #603-4000**



**A = Levelling height adjustment range: 32mm to 50mm / 1.25" to 2.0"**

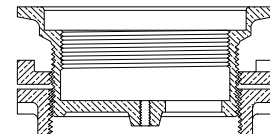
**To specify & order a complete fixture:**

**Base + Options + Fitting**

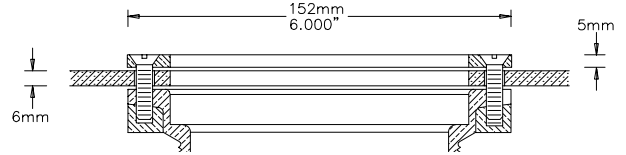
Example: To order PEM 6103, with 05 threaded top, 08 Under Deck Clamp, 09 Elevation Extension & 6222-5 Fitting:  
**Specify: 6103/05/08/09/6222-5**

The PEM 6100 Series are designed for the mounting of PEM 6200 Series pool, drain and suction fittings and are all cast bronze adjustable bases. Levelling height adjustment permits ease of installation to final floor grade. All pipes connecting into these bases should be non corrodible. As cement bonds well to clean natural cast bronze surfaces, normally no other no leak devices are required on connecting pipes. Threaded joints must have suitable thread sealant on threads.

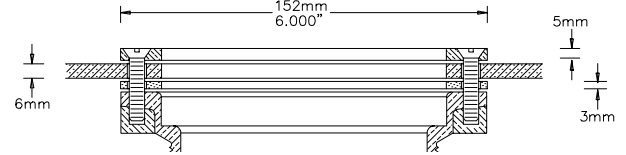
**- 05 OPTION (Add: /-05 TO # OF BASE)**  
**-THREADED TOP**



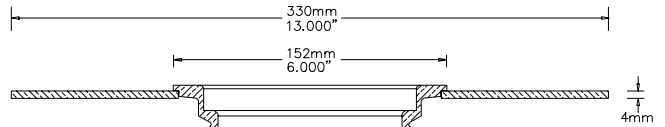
**- 02 OPTION (Add: /-02 TO # OF BASE)**  
**-SURFACE MEMBRANE CLAMP**



**- 03 OPTION (Add: /-03 TO # OF BASE)**  
**-SURFACE LINER CLAMP w. GASKET**

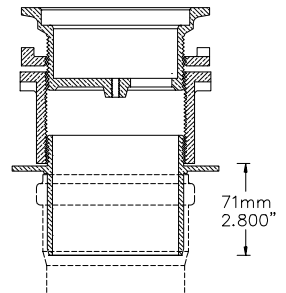


**- 04 OPTION (Add: /-04 TO # OF BASE)**  
**- PUDDLE FLANGE - For liquid membranes**



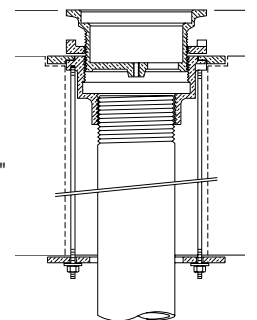
**- 07 OPTION (Add: /-07 TO # OF BASE)**

**4" BSP/NPS ADAPTER FOR PEM 6104 BASE FOR DIN 19534 PVC PIPE WITH DIN 4060 LIP SEALS (DN :100mm )**



**- 08 OPTION (Add: /-08 TO # OF BASE)**  
**UNDERDECK CLAMP**

FOR STANDARD SLAB THICKNESS OF :150mm\6" to 200mm\8" Custom made for other slab thickness. O.D. of Base & Clamp:190mm \ 7.5" I.D. of Opening in concrete:150mm \ 6"



**- 09 OPTION - (Add: /-09 TO # OF BASE)**  
**ELEVATION EXTENSION**

ADJUSTABLE EXTENSION ADDITIONAL TO NORMAL HEIGHT ADJUSTMENT: 45 to 80 mm \ 1.750" to 3.140"

