

PEM 776 Lake Cascade Jet is waterlevel dependent and produces an intermediate diameter , 'White Water' spray effect that is highly visible for long distances. Normal application is in floating lake fountains and lake aerators that require a highly visible spray effect with an approximate spray width at its base of up to 1/3 of sprayheight.

The spray effect is adjustable as to appearance (density) and height by a proportioning of the pond water drawn in by the jet . The air intake is fixed . The adjustment does not affect the 'UT' . The water intake ports adjustment can be affected from above waterlevel by turning the lift bolts (4) with a wrench clockwise (1/2 turn each,one after the other) to raise the spray,counter clockwise to lower the spray. **PEM 776 Lake Cascade Jets** are made of brass and bronze, stainless steel fitted.

These jets must be protected from pool surging when used in smaller pools or ponds. Best, solid, spray effects are within the lower 2/3 of the shown sprayheights .

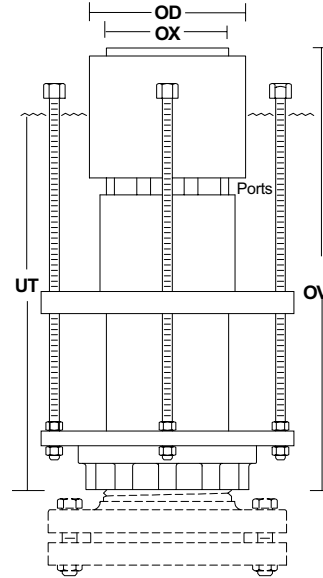
For vertical alignment the use of PEM08-10, 6" Adjustment Flange is recommended.

PERFORMANCES :				
Ports Open :				
32mm\1.250"		51mm\2.0"		
V	FL	MC	FL	MC
m	L	m	L	m
3	155	7	1900	9
6	2230	15	2600	18
10	2850	25	3200	30
15	3500	38	4100	45
20	4200	50	4600	60
30	4900	75	5200	90
Ft	G	Ft	G	Ft
10	410	25	500	30
20	590	50	600	60
50	925	125	1100	150
80	120	200	1300	240
100	130	250	1400	300

DIMENSIONS :	
T	: 6"
OX	: 153mm\6.0"
OV	: 575mm\22.64"
OD	: 330mm\13.00"
UT	: 500mm\20.0"

NOTE:
As this type of spray effect is usually operated without a control valve to limit the flow/pump output, it is recommended that the electrical motor starter for the pump be sized for the full flow amperage of the pump to avoid overloading and contact burn out.

Pressures greater than shown might damage jets.



PEM 776

The performances shown are for undisturbed, linear inflow into jet at given 'UT' immersion and shown port openings. Performances are extremely variable due to different 'UT' immersions and water intake adjustment. Maximum height with exclusion of pond water can reach up to appr. within 20% of nozzle pressure . Minimum height with entry ports fully open can be appr. less than 50% of shown values. For directional adjustment mount Jet on to 08-10 Adjustment Flange. Supply pipe must be flow sized .

PEM 796 Lake Geyser Jets are made of brass and bronze, stainless steel fitted. PEM 796 Lake Geyser Jet is waterlevel dependent and produces a wide, fluffy 'White Water Geyser' spray effect that is highly visible for long distances. Normal application is in floating lake fountains and lake aerators that require a highly visible spray effect with an approximate spray diameter at its base of more than 50% of sprayheight . This jet can produce about the greatest spray filled volume of air of any single spray jet.

The spray effect is adjustable as to appearance (density) and height by adjusting the immersion of the jet discharge. The air intake snorkels (4) are fixed . The immersion ('UT2') adjustment of the discharge can be affected from above waterlevel by turning the lift bolts (4) with a wrench clockwise (1/2 turn each, one after the other) to raise the spray, counter clockwise to lower the spray.

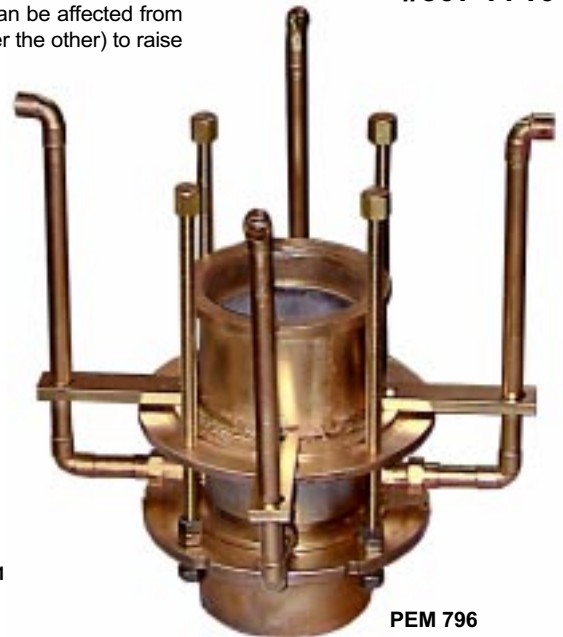
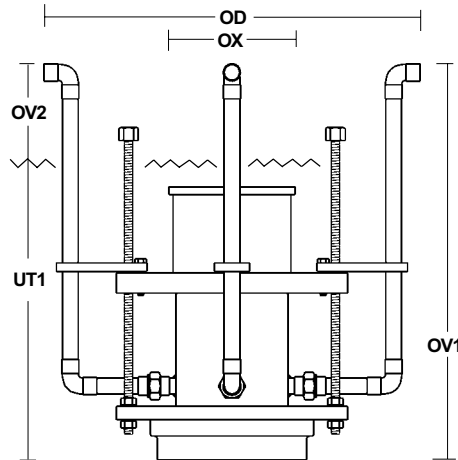
These jets must be protected from pool surging when used in smaller pools or ponds.

DIMENSIONS

T	: 6"
OX	: 153mm\6.000"
OV1	: 560mm\22.050"
OV2	: 100mm\3.940"
OD	: 540mm\21.260"
UT1	: 440mm\17.330"
UT2	: Variable, see below
SS	: 40mm\1.500"

PERFORMANCES :				
UT2		100mm\4.0"		
V	FL	MC	FL	MC
m	L	m	L	m
3	1400	6	2300	15
6	2100	12	3200	30
10	2600	20	4200	50
15	3200	30	4900	75
20	3700	40	5400	100
30	4600	60	5900	150
Ft	G	Ft	G	Ft
10	370	20	590	50
20	540	40	840	100
50	800	100	1300	250
80	1100	160	1400	400
100	1200	200	1650	500

For vertical alignment the use of PEM 08-10. Adjustment Flange is recommended.



PEM 796

NOTE:
As this type of spray effect is usually operated without a control valve to limit the flow/pump output, it is recommended that the electrical motor starter for the pump be sized for the full flow amperage of the pump to avoid overloading and contact burn out. Pressures greater than shown might damage jets.

The performances shown are for undisturbed, linear inflow into jet at given 'UT2' immersion. Performances are extremely variable due to different 'UT2' dimensions and sleeve adjustments. So greater the 'UT2' dimension, so heavier and wider the spray, but also so greater the intake pressure and flow requirements. If at an installation, the jet operates too high and thin, then lower the whole jet and extend the air snorkel tubes (3/4" American size copper tube) until the desired effect has been achieved. For directional adjustment, mount Jet onto 08-10, 6" Adjustment Flange. Supply pipe must be flow sized.

PEM 776

6" LAKE CASCADE JET

#507-7510

PEM 796

6" LAKE GEYSER JET

#507-7710