

SUBMERSIBLE LIGHTFIXTURE

PEM E41

NICHE FIXTURE

FIXTURE TYPES

1. T4-MC, CSA, 120V, max. 250W.
2. T4-MC, UL, 120V, max. 250W.
3. T4-MC, CS, 240V, max. 250W.
4. JC, UL, 12V max. 100W / 24V max.150W.
5. JC, CSA/CS/CE, 12V max.100W or 24V max.150W.
6. LV, UL/CSA/CE, 12V, (For MR 16 Lamps). max. 12V max. 75W
7. DW, 120V / 240V, Max. 50W, (For GU10 Reflector Lamp)



DESCRIPTION:

A high intensity lightfixture, ball joint mounted in niche that can be externally directionally adjusted after installation to a max. of 30 degrees included angle within a 360 degrees range. Grout frame of niche permits flush installation into concrete surface. Large vent openings in facering are to promote cooling water or air circulation around fixture in niche.

LAMPS: Quartz Halogen-OPTIONAL. Not part of fixture.

- T4-MC: 120V / 240V**, Mini Candelabra, T4-MC / E11 base .
- DW: 120V / 240V**, Max. 50W, GU10 Reflector Lamp, GZ10 Base.
- JC-12V:** JC Type Bi pin Lamp, 6.35-1.0 base, max. 100W.
- JC-24V:** JC Type Bi pin Lamp, 6.35-1.0 base, max. 150W/24V (Axial Filament Lamps).
- LV- 12V: MR16(50mm)**, GX5.3 base with Aluminized Reflector.

FIXTURE OPTIONS:

- Fixture & Facering are of cast bronze, Stainless Steel fitted.
- 'S' and 'F' type fixtures have water cooled parabolic reflector integral with housing.
- 'S': Option has polished reflector with concentrated beam output - spotlight.
- 'F': Option has diffused output with better color rendition - flood light.

LAMP HOLDERS:

- T4-MC, 120V and 240V** -S25 Mini Candelabra (E11) - ceramic.
- 'LV', 12V** Rim clamp & Bi Pin Socket GX 5.3.
- 'JC', 12V & 24V:** Bi Pin Socket G 6.35-1.0.
- 'DW':** Rim Clamp & GZ10 Twist lock Socket.

LENSES: CONVEX LENS: 80mm / 3.149" O.D.

Tempered cast boron silicate glass with amplifying output, fresnels on inside center of lens. Available in clear or 5 colors at no extra cost (See page 310) .

LENS GASKET: Custom molded U shape high temperature Silicone Rubber.

THERMAL CUT OFF: Optional for 120V & 240V Fixtures only. Integral, automatic self resetting type to protect cable entry.

FIXTURE HOUSING & FACERING:

Cast Bronze with stainless steel fasteners and Neoprene Seals.

ELECTRICAL CABLE: Approved for the purpose with integral epoxy encapsulated compression type cable entry in factory assembled fixtures.

See pages 308 & 309 for low voltage cable size and length.

NICHE: Standard

Spun stainless steel with cast bronze face and anchor rings, Stainless Steel fitted. Cable entry through side, combination conduit entry, 3/4" male NPT / BSP, 1/2" female NPT / BSP and removable internal cordseal. Enquire for other applications. Niche has 2 tie up anchors for mounting to concrete form with bare solid copper wire.

Optional: (Must be specified)

All cast bronze Niche for in concrete application, no Liner Clamp.
Same Dimensions as Standard Niche.

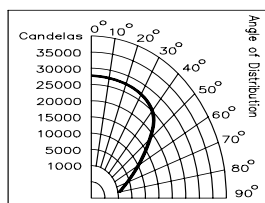
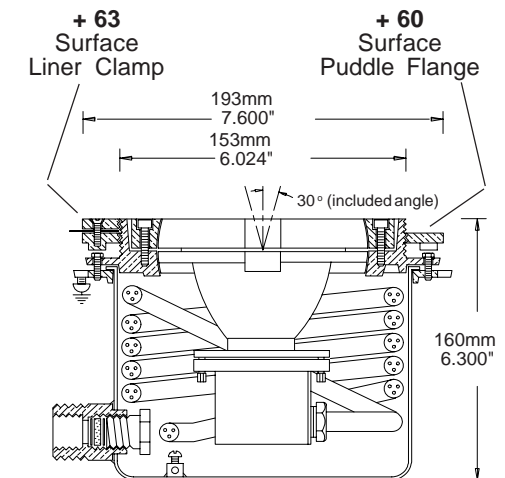
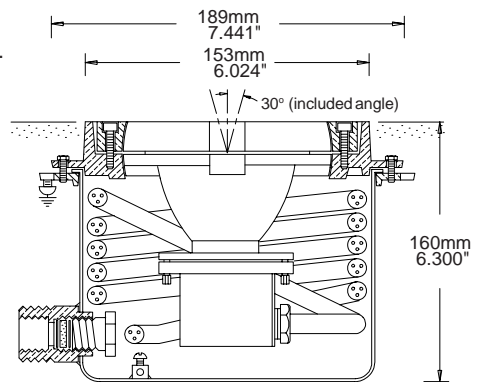
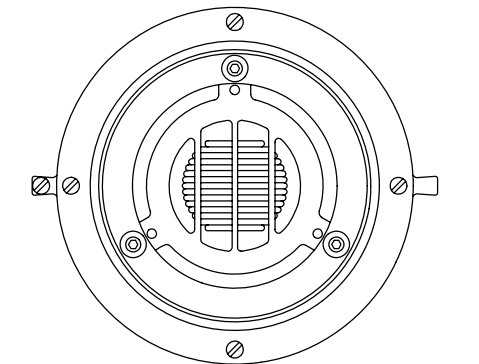
TILE MASK: TMR Round, **TMS**, Square, natural cast bronze for epoxy grout mounting.

Chrome plating of tile mask includes plating of niche rim and fixture facering. Chrome plating with original order only.

WATER PROOFING OPTIONS (ADD ON) :

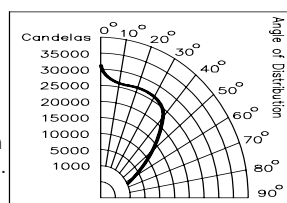
- 350-4121 - 60 SURFACE FLANGE.** For liquid surface waterproofing membrane.
- 350-4123 - 63 SURFACE LINER CLAMP.** Gasketed for surface metal or fibreglass liners.

CANDLE POWER with 250 W / 120V lamp (In open air) 1m / 3.28 feet from clear lens.



With Lens Fresnels VERTICAL

E40-T4-MC
'S' Type Fixture
CANDLE POWER
LIGHT OUTPUT
with 250W / 120V Lamp (In open air) 1m / 3.28 feet from clear lens.



With Lens Fresnels HORIZONTAL

PEM E41

2006-10

 <p>E41 Top View</p>	SERIAL	PEM		CABLE	W.	
	311 0000	Cat.		Length & Size	Kg	
			FOR LAMPS AS INDICATED (Not included)			
			Select cable size to suit lamp(s) wattage (Amperage)			
			FIXTURE WITH STAINLESS STEEL NICHE, CONVEX LENS & CABLE			
	310-102810	E41-S-1-10	UL/CSA- T4- E11,max.120V, 250W Wet, 20W Dry	4.5m/15' x 16/3 STWA	7.5	
	311-402815	E41-S-1-15	For T4- E11,max.240V, 250W Wet, 20W Dry	5m x 3 x 1.5mm2	7.5	
	310-102816	E41-S-1-16	For T4- E11,max.240V, 250W Wet, 20W Dry	10.0m x 3 x 1.5mm2	8.7	
	310-102820	E41-F-1-20	UL/CSA- T4- E11,max.120V, 250W Wet, 20W Dry	4.5m/15' x 16/3 STWA	7.5	
	310-102823	E41-F-1-23	For T4- E11,max.240V, 250W Wet, 20W Dry	5.0m x 3 x 1.5mm2	8.7	
	310-102825	E41-F-1-25	For T4- E11,max.240V, 250W Wet, 20W Dry	10.0m x 3 x 1.5mm2	8.7	
	310-102840	E41-S-2-40	JL/CSA- JC, Bi Pin,12V/ 24V, max 150W Wet, 20W Dry	4.5m/15' x 16/3 STWA	7.5	
	310-102843	E41-S-2-43	For JC, Bi Pin,12V/ 24V, max 150W Wet, 20W Dry	5.0m x 3 x 1.5mm2	7.5	
	310-102845	E41-S-2-45	For JC, Bi Pin,12V/ 24V, max 150W Wet, 20W Dry	10.0m x 3 x 1.5mm2	8.7	
	310-102850	E41-F-2-50	JL/CSA-JC, Bi Pin,12V/ 24V, max 150W Wet, 20W Dry	4.5m/15' x 16/3 STWA	6.8	
	310-102853	E41-F-2-53	For JC, Bi Pin,12V/ 24V, max 150W Wet, 20W Dry	5.0m x 3 x 1.5mm2	8.7	
	310-102856	E41-F-2-56	For JC, Bi Pin,12V/ 24V, max 150W Wet, 20W Dry	10.0m x 3 x 1.5mm2	8.7	
	310-102860	E41-LV-1-60	UL/CSA-MR16,12V/24V,Max.20W Dry,max 20 W.Wet	4.5m/15' x 16/3 STWA	7.4	
	310-102862	E41-LV-1-62	For MR16, 12V/24V, Max. 20W Dry, max 20 W. Wet	5.0m x 3 x 1.5mm2	8.7	
	310-102864	E41-LV-1-64	For MR16, 12V/24V, Max. 20W Dry, max 20 W. Wet	10.0m x 3 x 1.5mm2	8.7	
	310-102865	E41-LV-1-65	For MR16, 12V/24V, Max. 20W Dry, max 75 W. Wet	5.0m x 2 x 2.5mm2	9.8	
	310-102867	E41-LV-1-67	For MR16, 12V/24V, Max. 20W Dry, max 75 W. Wet	10.0m x 2 x 2.5mm2	9.8	
			For CSA - SOW-3/16 Cable is used.			
			ADD ON TO FIXTURES			
	391-1000	35-1-0000	80mm Flat Dichro Color Lens, (LV only)	Cat.P. 310/Web # 6	0.1	
	350-0003	+/-07	Thermal Cut Off for 120/240V only	Factory installed only		
	385-3330	T 301	Transformer 240V,50Hz x 12V/24V, 300VA	CE / IP23	2.2	
	350-4121	+/-60	Surface Puddle Flange		1.2	
	350-4123	+/-63	Surface Liner Clamp		2.9	
	350-4110	+/-58-1	Round Tile Mask		0.4	
	350-4220	+/-58-2	Square Tile Mask		0.7	



E41 3° Angled in Niche



E41 Side View