

SUBMERSIBLE OR DRY LIGHTFIXTURE **PEM C133**

CAST BRONZE LIGHTFIXTURES

TYPES:

C 133-1

1 x AR111 Lamp (UL/cUL & CE)

Max. 12V, Submerged - 100W, - Dry - 50W

C 133-3

3 x MR16 Lamps (UL/cUL & CE)

Max. 12V*, Submerged 3 x 75W, Dry 3 x 20W

C 133-4

3 x MR16 Lamps (UL/cUL & CE) Submerged

Max. 12V*, 3 x 1 x 50W for 3 COLOUR CHANGING

C 133-5

3 x GU10 Lamps (UL/cUL)

Max. 120V, Submerged 3 x 50W, Dry 3 x 20W

C 133-6 (UL/cUL)

3 x GU10 Lamps (UL/cUL) Submerged

Max. 120V, 3 x 1 x 50W for 3 COLOUR CHANGING

C 133-7 (UL/cUL)

4 x MR16 Lamps

Max. 12V*, Submerged 4 x 75W, Dry 4 x 20W

C 133-8 (UL/cUL) Submerged

4 x MR16 Lamps

Max. 12V*, 4 x 1 x 50W for 4 COLOUR CHANGING

C 133-9

3 x GU10 Lamps

Max. 240V, Submerged 3 x 50W, Dry 3 x 20W

C 133-10

3 x GU10 Lamps Submerged

Max. 240V, 3 x 1 x 50W for 3 COLOUR CHANGING

* = Outside North America Max. 24 V



C133-3 to -6
+ B1S



C133-1
+ B1S



C133-7 & -8
+ B1S

CONSTRUCTION OF LIGHTFIXTURES

FIXTURE HOUSING :

Cast bronze body and facering. Stainless Steel fitted.

LAMP(S): Not part of fixture.

LAMP HOLDER:

PAR36 or AR111 Lamps, Spring Ring

MR 16 Lamps, GX 5.3 Spring Clip Sockets

GU10 Lamps, GZ10 Twist Lock sockets

STANDARD LENS:

CONVEX LENS, Clear

5 colors (convex colour lenses for submersible use only).

OPTIONAL LENS:

FLAT CLEAR LENS.

FLAT DICHRO COLOUR LENS. Choice of 10 colors.

FLAT, CLEAR ARMoured LENS. 15mm thickness.

Replaces rockguard in certain applications.

LENS GASKET :

High Temperature Silicone Rubber. A single 'U' shaped gasket with unique safety sealing lips and contours.

ELECTRICAL CABLE:

Approved for the purpose with integral epoxy encapsulated, compression type cable entry.

See page PEM catalog page 309 for cable size & length.

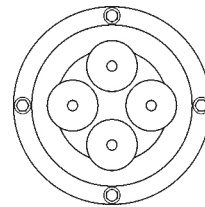
STAND ASSEMBLIES: OPTIONAL

See selection of stand assemblies on opposite page.

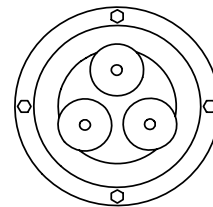
NICHE MOUNTINGS: See PEM C 131 or C131 +B46

ROCKGUARD: OPTIONAL (Not for 14-9 Armoured Lens)

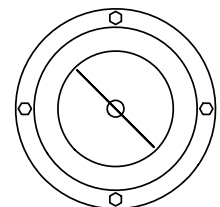
See selection of Rock Guards on opposite page



C133-7/8



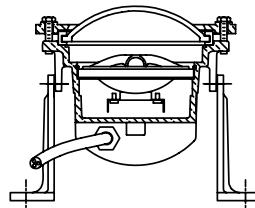
C133-3/4/5/6



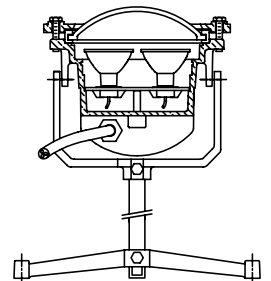
C133-1



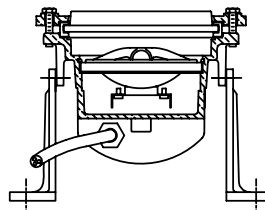
C133-1 + B6-2



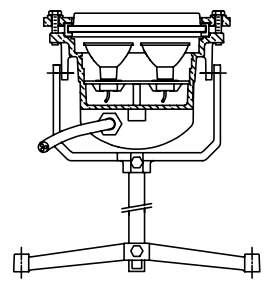
C133-3, / -8 + B1S



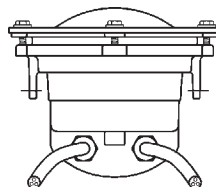
C133-1 + 14-9 + B6-2



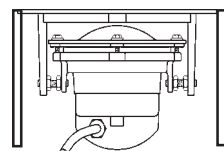
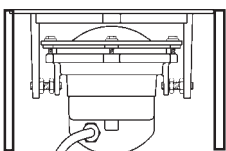
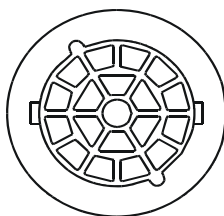
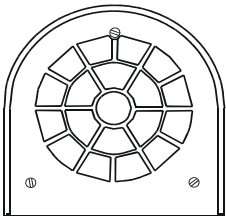
C133-3, / -8 + 14-9 + B1S



C133-2



FIXTURES UNDER SLABHANGER



C133 + B57

C133 + B56

PEM C133

2006-10

	SERIAL	PEM		CABLE	W.
	307-34000	Cat.		Length & Size	Kg
			FOR LAMPS AS INDICATED (Not included)		
			Select cable size to suit lamp(s) wattage (Amperage)		
			FIXTURES, NO STAND, NO LAMP(s) with Convex Lens		
	307-34813	C133-1-3	For 1 x 12V, AR111/PAR 36	2.7m x 2 x 2.5mm2	4.9
	307-34815	C133-1-5	For 1 x 12V, AR111/PAR 36	5.0m x 2 x 4mm2	5.7
	307-34817	C133-1-7	For 1 x 12V, AR111/PAR 36 UL, cUL	9' / 2.7m x 16/3 AWG	4.8
C133-1					
	307-34832	C133-3-2	For 3 x 12V, MR16, single circuit	2.7m x 2 x 1.5mm2	4.8
	307-34833	C133-3-3	For 3 x 12V, MR16, single circuit	5.0m x 2 x 1.5mm2	5.2
	307-34835	C133-3-5	For 3 x 12V, MR16, single circuit	2.7m x 2 x 4mm2	6
	307-34837	C133-3-7	For 3 x 12V, MR16, single circuit,UL,cUL	9' / 2.7m x 16/3 AWG	7.3
C133-3/4/5/6					
	307-34841	C133-4-1	For 3 x 12V, MR16, 3 circuits	2.7m x 5 x 1.5mm2	5.2
	307-34842	C133-4-2	For 3 x 12V, MR16, 3 circuits	5.0m x 5 x 1.5mm2	5.7
	307-34843	C133-4-2	For 3 x 12V, MR16, 3 circuits	2.7m x 5 x 2.5mm2	5.3
	307-34844	C133-4-4	For 3 x 12V, MR16, 3 circuits,UL,cUL	9' x 16/7 AWG	5.9
C133-4					
	307-34853	C133-5-3	For 3 x 120V, GU-10 , single circuit	2.7m x 3 x 1.5mm2	5.2
	307-34855	C133-5-5	For 3 x 120V, GU-10 , single circuit	5.0m x 3 x 1.5mm2	4.8
	307-34863	C133-6-3	For 3 x 120V, GU-10 , 3 circuits	2.7m x 5 x 1.5mm2	5.2
	307-34865	C133-6-5	For 3 x 120V, GU-10 , 3 circuits, UL,cUL	2.7m x 16/7 AWG	4.8
C133-5/6					
	307-34872	C133-7-2	For 4 x 12V, MR16, single circuit	2.7m x 2 x 1.5mm2	4.8
	307-34873	C133-7-3	For 4 x 12V, MR16, single circuit	5.0m x 2 x 2.5mm2	5.2
	307-34875	C133-7-5	For 4 x 12V, MR16, single circuit	2.7m x 2 x 4mm2	6
	307-34877	C133-7-7	For 4 x 12V, MR16, single circuit,UL,cUL	9' / 2.7m x 16/3 AWG	7.3
C133-7/8					
	307-34881	C133-8-1	For 4 x 12V, MR16, 4 circuits	2.7m x 5 x 1.5mm2	5.3
	307-34882	C133-8-2	For 4 x 12V, MR16, 4 circuits	5.0m x 5 x 1.5mm2	5.7
	307-34883	C133-8-3	For 4 x 12V, MR16, 4 circuits	5.0m x 2 x 2.5mm2	5.4
	307-34884	C133-8-4	For 4 x 12V, MR16, 4 circuits,UL,cUL	2.7m x 16/9 AWG	5.9
C133-8+B1					
	307-34891	C133-9-1	For 3 x 240V, GU-10 , single circuit	2.7m x 3 x 1.5mm2	5.2
	307-34892	C133-9-2	For 3 x 240V, GU-10 , single circuit	5.0m x 3 x 1.5mm2	4.8
	307-27901	C133-10-3	For 3 x 240V, GU-10 , 3 circuits	2.7m x 5 x 1.5mm2	5.2
	307-27902	C133-10-4	For 3 x 240V, GU-10 , 3 circuits	5.0m x 5 x 1.5mm2	6.8
C133-9/10					
			ADD ON TO STANDARD FIXTURES		
	391-2001	30-2	143mm Clear Flat Lens	See Catalog Page 310	0.1
	391-2000	35-2-0000	143mm Flat Dichro Color Lens	See Catalog Page 310	0.1
	391-0114	14-2-9	143mm x 15mm Clear Flat Armored Lens	See Catalog Page 310	1.2
	350-1123	+/-2C	2 Cable entries, 2 x 6.0mm2 & 2 x 2.5mm2	Factory wired only	+0.4
	350-1133	+/-2D	2 Cable entries, 2 x 6.0mm2 & 2 x 4.0mm2	Factory wired only	+0.5
	334-3292	+/-6/-92	Brass Lens Shade for Dichro Color Lens		0.8
	350-0014	+/-10-2	Clip On Rockguard		0.8
	350-0026	+/-10-6	Swing Up Rockguard		0.7
	350-0029	+/-10-7	Lensguard (not for 14-2-9)		0.2
	350-0109	+/-B1	Tripod Stand, 40cm WD		1.4
	350-0110	+/-B1S	Tripod Stand, 25cm WD		1.2
	350-0130	+/-B4	Ring Stand, 60cm WD		2.8
	350-0270	+/-B6-2	Mounting Brackets, 18cm WD		2.0
	350-0300	+/-B7S	Mounting Yoke		0.7
	350-0320	+/-B30-0	B 30 Niche, Side Conduit, Brass fitted	Requires extra cable length	3.7
	350-0321	+/-B30-1	B 30 Niche, Side Conduit, St.St. fitted	Requires extra cable length	3.7
	350-0324	+/-B30-4	B 30 Niche, Bottom Conduit, Brass fitted	Requires extra cable length	3.7
	350-0325	+/-B30-5	B 30 Niche, Bottom Conduit, St.St. fitted	Requires extra cable length	3.7
C133+B56-1	385-3330	T 301	Transformer 240V,50Hzx12V/24V,300VA	CE / IP23	2.2